



# FREDERICK COUNTY TRANSFER STATION AND PROCESSING FACILITY RETROFIT DESIGN

## 9031 REICHS FORD ROAD, FREDERICK, MARYLAND

MARCH 2025



PROJECT AERIAL IMAGE

MAP SOURCE: BING IMAGERY (2023)

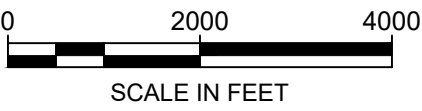


Sheet List	
Sheet Number	Sheet Title
1	COVER SHEET
2	EXISTING CONDITIONS
3	EXISTING CONDITIONS WEST SIDE BUILDING EXTERIOR
4	PROPOSED CONDITIONS
5	GRADING PLAN
6	PROPOSED CONDITIONS BUILDING EXTERIOR
7	TRAFFIC FLOW PLAN
8	STRUCTURAL NOTES
9	STRUCTURAL NOTES
10	PARTIAL FOUNDATION PLAN
11	SECTIONS
12	FRAMING SECTIONS



PROJECT FOCUS MAP

MAP SOURCE: BING IMAGERY (2023)



PREPARED FOR:

FREDERICK COUNTY DIVISION OF  
SOLID WASTE AND RECYCLING  
9031 REICHS FORD ROAD,  
FREDERICK, MARYLAND 21074

PREPARED BY:

**Geosyntec**  
consultants

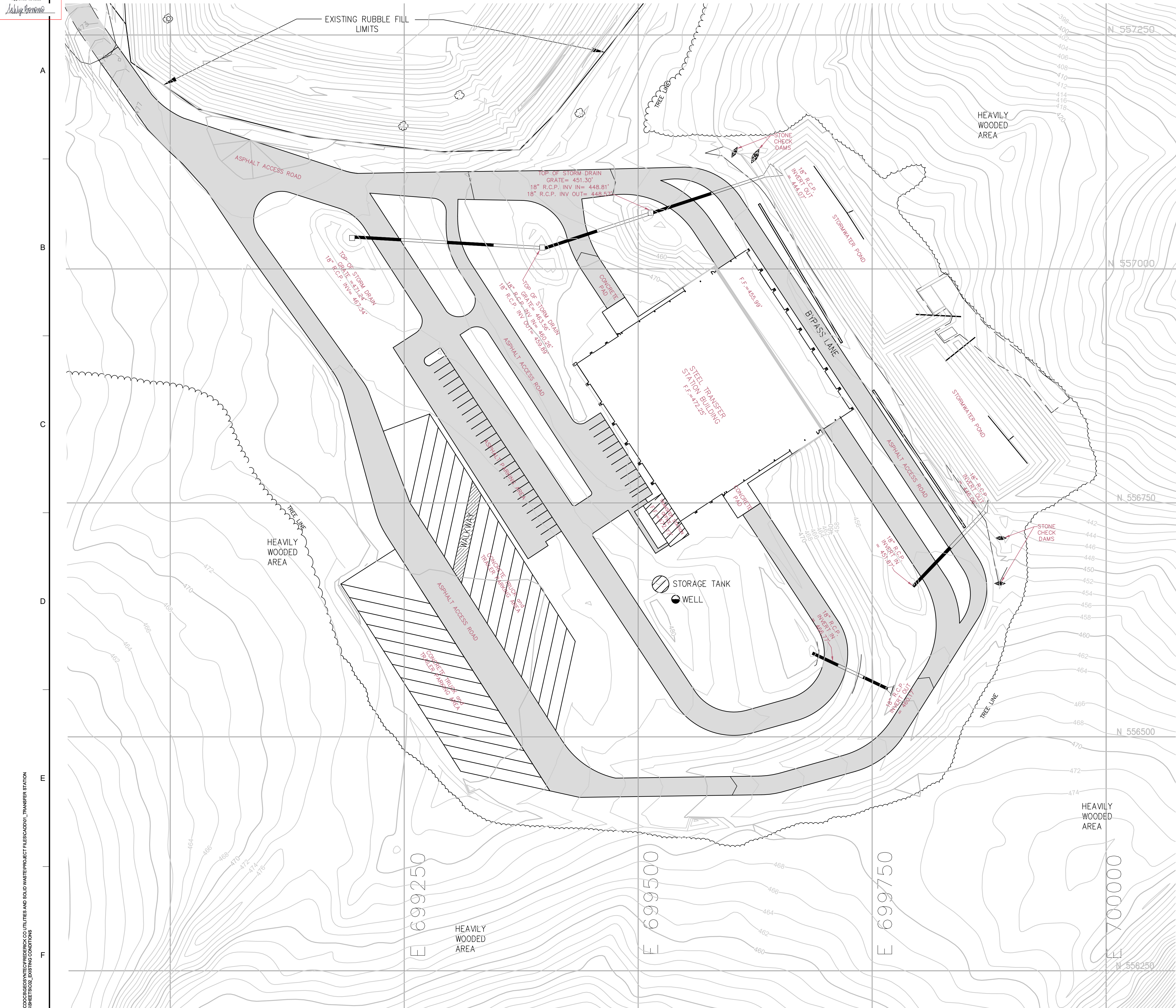
10211 WINCOPIN CIRCLE, FLOOR 4  
COLUMBIA, MARYLAND 21044  
PHONE: (410) 381-4333

REV	DATE	DESCRIPTION	DRN	APP
<b>Geosyntec</b> consultants 10211 WINCOPIN CIRCLE, FLOOR 4 COLUMBIA, MARYLAND 21044 USA TELEPHONE: 410.381.4333				
TITLE: COVER SHEET				
PROJECT: TRANSFER STATION RETROFIT				
SITE: FREDERICK COUNTY TRANSFER STATION FREDERICK, MARYLAND				
SIGNATURE <i>Maura Viswanath</i> 3/26/2025 DATE		STATE OF MARYLAND PROFESSIONAL ENGINEER 57584	DESIGN BY: JFB DRAWN BY: TCR CHECKED BY: TR REVIEWED BY: MLV APPROVED BY: MLV	DATE: MARCH 2025 PROJECT NO.: ME2602 FILE: DRAWING NO.: 1 OF 12

CONSTRUCTION DRAWING

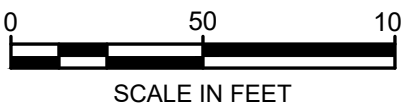
C:\GEO\ACAD\GEO\GEO\GEO\GEO\FREDERICK CO UTILITIES AND SOLID WASTE\PROJECT FILES\CADD\01\_TRANSFER STATION RETROFIT\WSSHEETS\01\_COVER SHEET





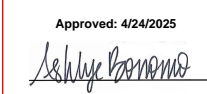
LEGEND	
	EXISTING GROUND ELEVATION (FEET)
	PIPES
	EDGE OF PAVEMENT
	TREE LINE
	PAVEMENT

- NOTES:
- EXISTING CONDITIONS FROM FINAL PLANS PROVIDED BY SCS ENGINEERING DATED SEPTEMBER 2007. EXISTING CONDITIONS TO BE FIELD-VERIFIED BY CONTRACTOR.
  - CONTRACTOR TO PROTECT ALL EXISTING INFRASTRUCTURE INCLUDING INTERIOR SECURITY CAMERAS.



REV	DATE	DESCRIPTION	DRN	APP
 10211 WINCOPIN CIRCLE, FLOOR 4 COLUMBIA, MARYLAND 21044 USA TELEPHONE: 410.381.4333				
TITLE: EXISTING CONDITIONS				
PROJECT: TRANSFER STATION RETROFIT				
SITE: FREDERICK COUNTY TRANSFER STATION FREDERICK, MARYLAND				
 SIGNATURE 3/26/2025 DATE				DESIGN BY: JFB DATE: MARCH 2025 DRAWN BY: TCR PROJECT NO.: ME2602 CHECKED BY: TR FILE: REVIEWED BY: MLV DRAWING NO.: APPROVED BY: MLV
				2 OF 12

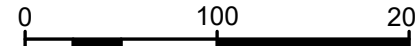




\\GEO-ACC\ACCDOS\GEO\SYNTEC\FREDERICK CO UTILITIES AND SOLID WASTE\PROJECT FILES\ACD\01\_TRANSFER STATION RETROFIT\DWGS\SHEETS\C04\_EXISTING CONDITIONS BUILDING EXTERIOR

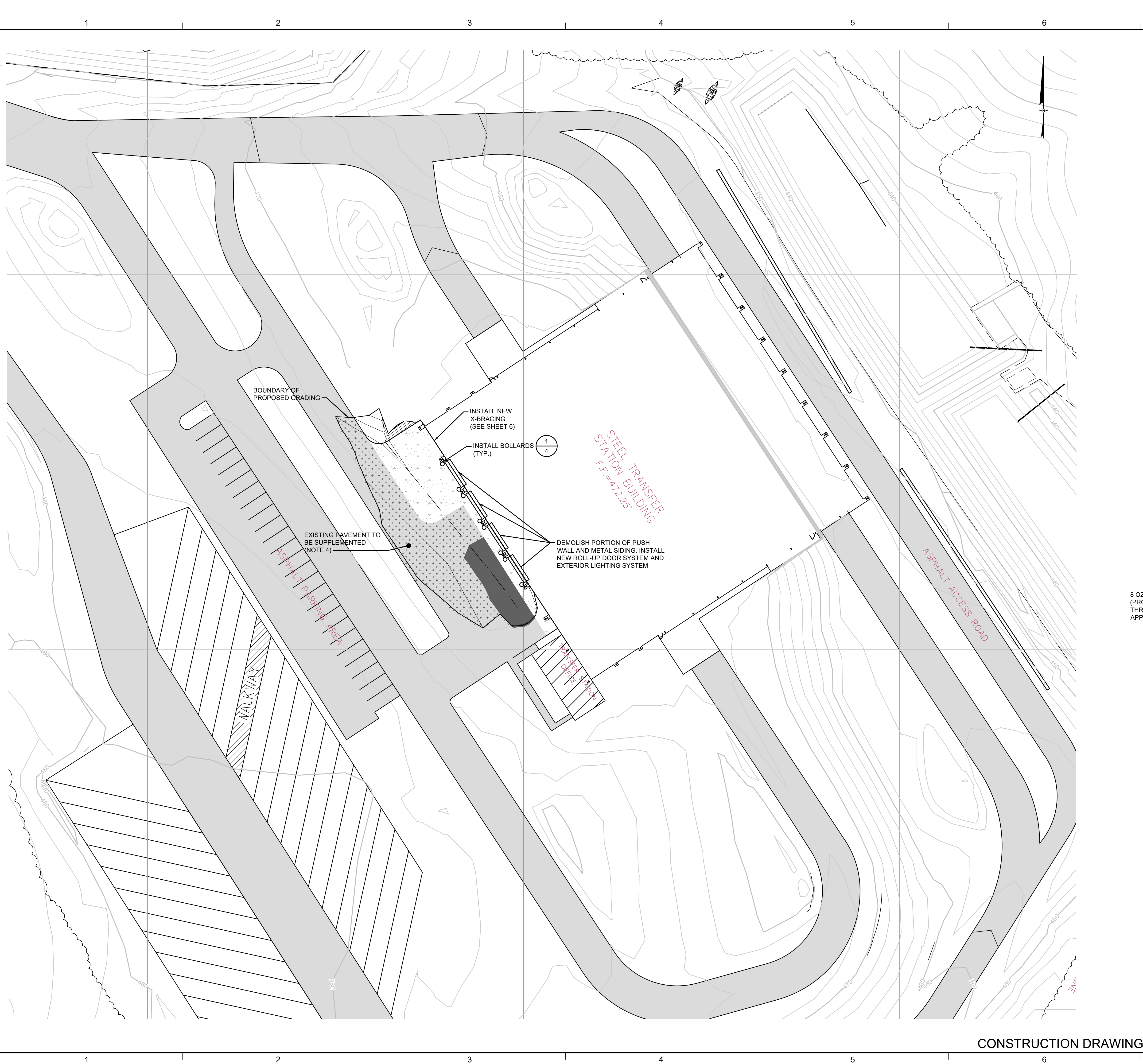


1. EXISTING CONDITIONS FROM FINAL PLANS PROVIDED BY SCS ENGINEERING DATED SEPTEMBER 2007, EXISTING CONDITIONS TO BE FIELD-VERIFIED BY CONTRACTOR.
2. REFER TO DRAWING 2 FOR PLAN VIEW OF BUILDING.
3. CONTRACTOR TO PROTECT ALL EXISTING INFRASTRUCTURE INCLUDING INTERIOR SECURITY CAMERAS.

[illegible]

## CONSTRUCTION DRAWING





**LEGEND**

	EXISTING GROUND ELEVATION (FEET)
	PIPES
	EDGE OF ROAD
	PROPOSED EDGE OF PAVEMENT
	TREE LINE
	PROPOSED PAVEMENT
	EXISTING PAVEMENT
	EXISTING PAVEMENT TO BE REMOVED AND REPLACED FOLLOWING REGRAIDING
	EXISTING PAVEMENT TO BE SUPPLEMENTED

**DETAIL 1/4 BOLLARD**

SCALE: 1" = 2'

**DETAIL 2/4 PAVEMENT SECTION**

SCALE: 1" = 1'

**NOTES:**

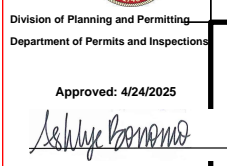
- EXISTING CONDITIONS FROM FINAL PLANS PROVIDED BY SCS ENGINEERING DATED SEPTEMBER 2007. EXISTING CONDITIONS TO BE FIELD-VERIFIED BY CONTRACTOR.
- ASPHALT ACCESS ROAD TO BE RE-GRADED. SEE SHEET 5 FOR GRADING PLAN.
- CONTRACTOR TO PROTECT ALL EXISTING INFRASTRUCTURE INCLUDING INTERIOR SECURITY CAMERAS.
- EXISTING PAVEMENT TO BE SUPPLEMENTED BY PLACING ADDITIONAL PAVEMENT. IN AREAS WHERE FINAL GRADE EXCEEDS EXISTING GRADE BY THE PAVEMENT SECTION (9 INCHES), PLACE FULL ASPHALT AND AGGREGATE BASE SECTION AND THICKEN AGGREGATE BASE SECTION, AS NEEDED. BREAK ASPHALT PRIOR TO PLACING AGGREGATE BASE TO ALLOW DRAINAGE.
- WOVEN GEOTEXTILE SHALL ONLY BE PLACED ON PREPARED SUBGRADE, NOT ON SUPPLEMENTED PAVEMENT.

REV	DATE	DESCRIPTION	DRN	APP
<p><b>Geosyntec consultants</b></p> <p>10211 WINCOPIN CIRCLE, FLOOR 4 COLUMBIA, MARYLAND 21044 USA TELEPHONE: 410.381.4333</p> <p>0 30 60 SCALE IN FEET</p>				
TITLE: PROPOSED CONDITIONS				
PROJECT: TRANSFER STATION RETROFIT				
SITE: FREDERICK COUNTY TRANSFER STATION FREDERICK, MARYLAND				
SIGNATURE: <i>Mina Viswanath</i> 3/26/2025 DATE		DESIGN BY: JFB DRAWN BY: TCR CHECKED BY: TR REVIEWED BY: MLV APPROVED BY: MLV		
STATE OF MARYLAND PROFESSIONAL ENGINEER S7584		DATE: MARCH 2025 PROJECT NO.: ME2602 FILE: DRAWING NO.: 4 OF 12		

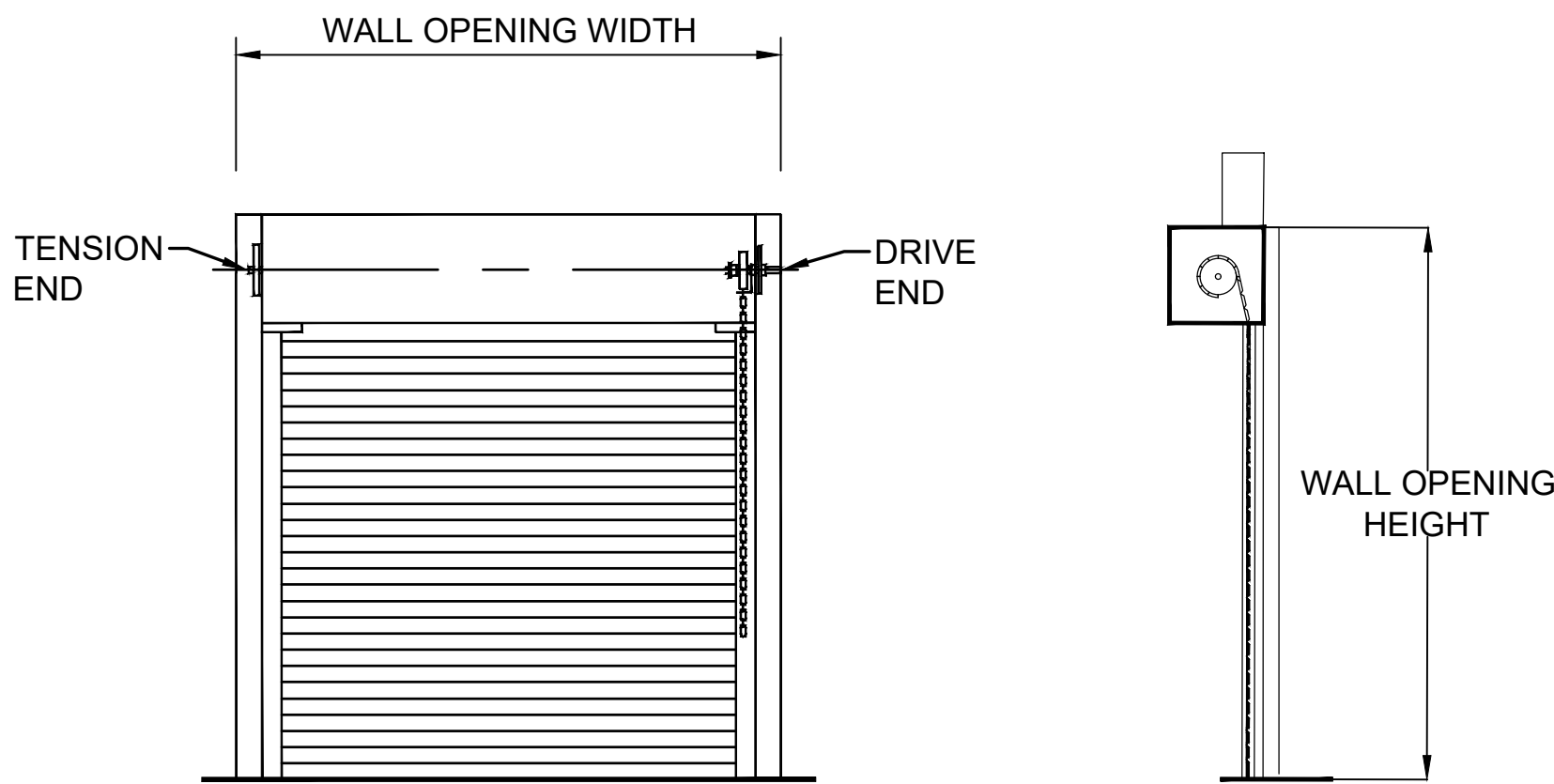








C:\GEO-ACC\ACCD\GEO\SYNCFREDERICK CO UTILITIES AND SOLID WASTE\PROJECT FILES\CADD\01\_TRANSFER STATION RETROFIT\DWG\SS\SHEETS\C07\_PROPOSED CONDITIONS BUILDING EXTERIOR

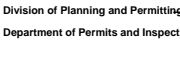


SCALE: 1" = 30'

# CONSTRUCTION DRAWING

REV	DATE	DESCRIPTION						DRN	APP
<div><div><div>Geosyntec</div><div>consultants</div></div><div>10211 WINCOPIN CIRCLE, FLOOR 4 COLUMBIA, MARYLAND 21044 USA TELEPHONE: 410.381.4333</div></div>									
TITLE: <div>PROPOSED CONDITIONS BUILDING EXTERIOR</div>									
PROJECT: <div>TRANSFER STATION RETROFIT</div>									
SITE: <div>FREDERICK COUNTY TRANSFER STATION FREDERICK, MARYLAND</div>									
<div><div><div>Neena Viswanath</div><div>SIGNATURE</div><div>3/26/2025</div><div>DATE</div></div></div>		<div><div><div>STATE OF MARYLAND</div><div>NEENA VISWANATH</div><div>97584</div><div>PROFESSIONAL ENGINEER</div></div></div>		DESIGN BY: JFB		DATE: MARCH 2025			
				DRAWN BY: TCR		PROJECT NO.: ME2602			
				CHECKED BY: TR		FILE:			
				REVIEWED BY: MLV		DRAWING NO.:			
				APPROVED BY: MLV		<div>6</div> OF <div>12</div>			





Division of Planning and Permitting  
Department of Permits and Inspection







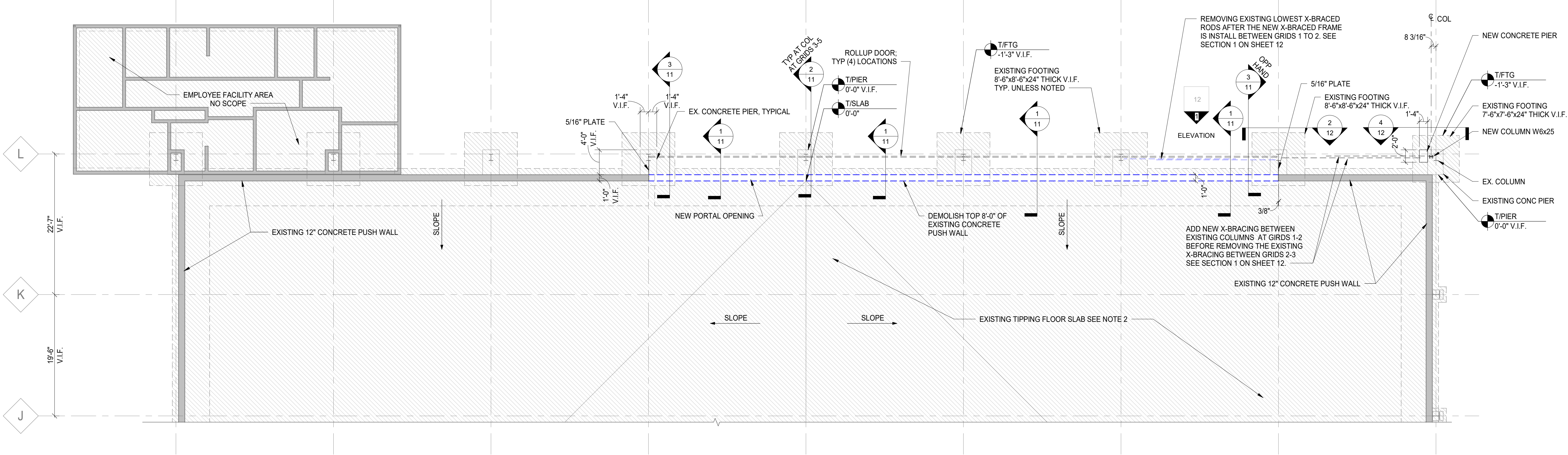






A  
B  
C  
D  
E  
F

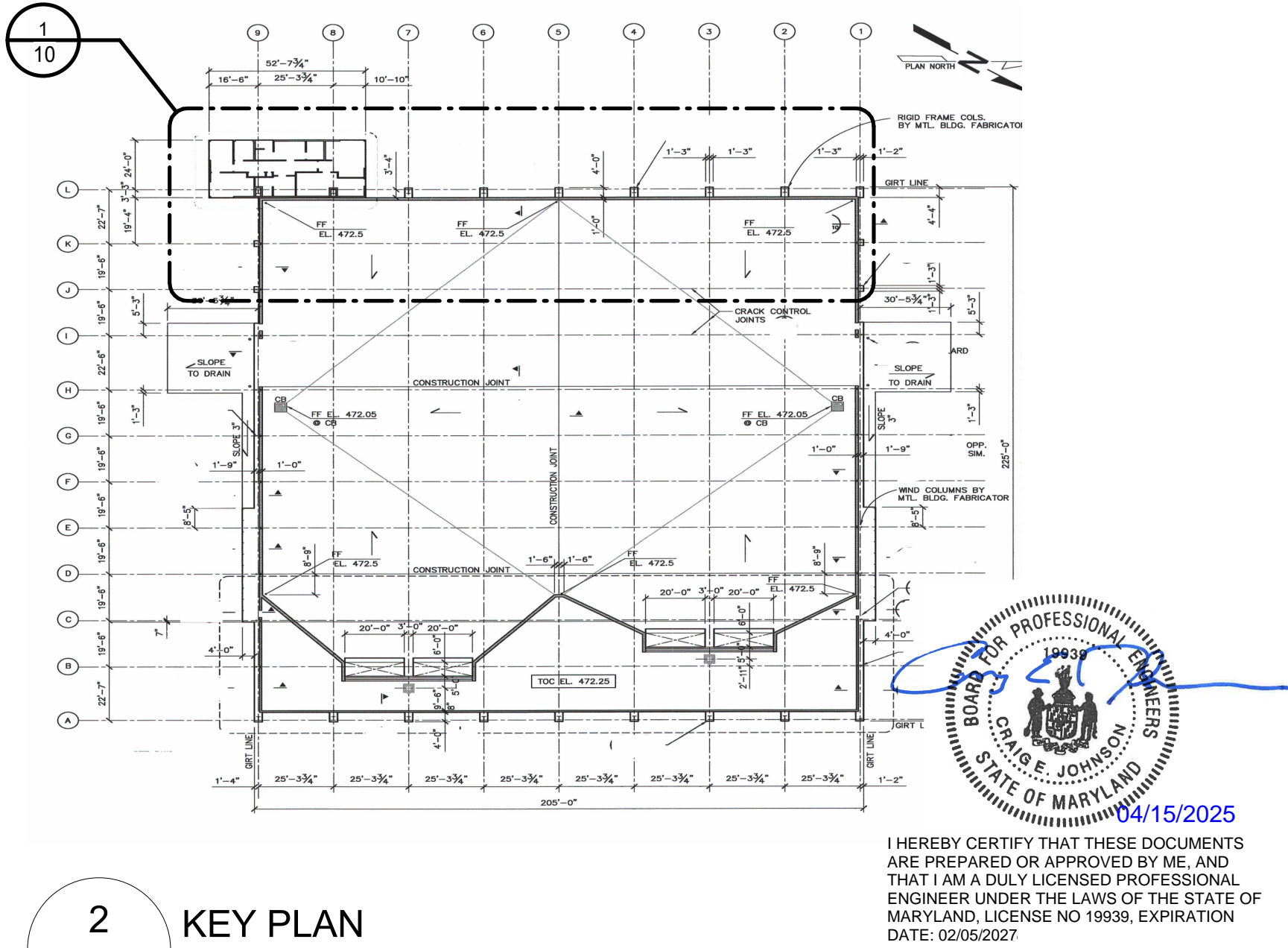
A  
B  
C  
D  
E  
F



1 PARTIAL FOUNDATION PLAN  
10 SCALE: 1/8" = 1'-0"

FOUNDATION PLAN NOTES

- SEE SHEETS 8 THRU 9 FOR STRUCTURAL NOTES AND SHEETS 11 THRU 12 FOR TYPICAL DETAILS. THE TYPICAL DETAILS APPLY WHEREVER THE CONDITION EXISTS UNLESS DETAILED OTHERWISE.
- EXISTING 9" CONCRETE SLAB ON GRADE WITH #5 AT 12" O.C. TOP AND BOTTOM WITH 3" CONCRETE TOPPING SLAB. SEE THE PLAN FOR THE TOP OF SLAB ELEVATION. ELEVATION 0'-0" CORRESPONDS TO AN APPROXIMATE ELEVATION OF 472.25' V.I.F. AT HIGH POINT. COORDINATE FINAL ELEVATION WITH SITE/CIVIL DRAWINGS.
- SEE THE PLAN FOR TOP OF WALL FOOTING AND COLUMN FOOTING ELEVATIONS. THE TOP OF FOOTING ELEVATIONS ARE REFERENCED FROM ELEVATION 0'-0". FOOTING ELEVATIONS ARE FOR BIDDING PURPOSES ONLY AND MAY HAVE TO BE ADJUSTED BASED ON FIELD CONDITIONS ENCOUNTERED DURING EXCAVATION.
- THE TOP OF PIER ELEVATION SHALL BE AT 0'-0" TOP OF FLOOR SLAB UNLESS NOTED OTHERWISE.
- ALL COLUMNS, PIERS, AND COLUMN FOOTINGS SHALL BE CENTERED ON GRID LINES UNLESS NOTED OTHERWISE.
- REFER TO THE GEOSYNTEC DRAWINGS FOR DIMENSIONS NOT SHOWN.



2 KEY PLAN  
10 SCALE: 3/4" = 1'-0"

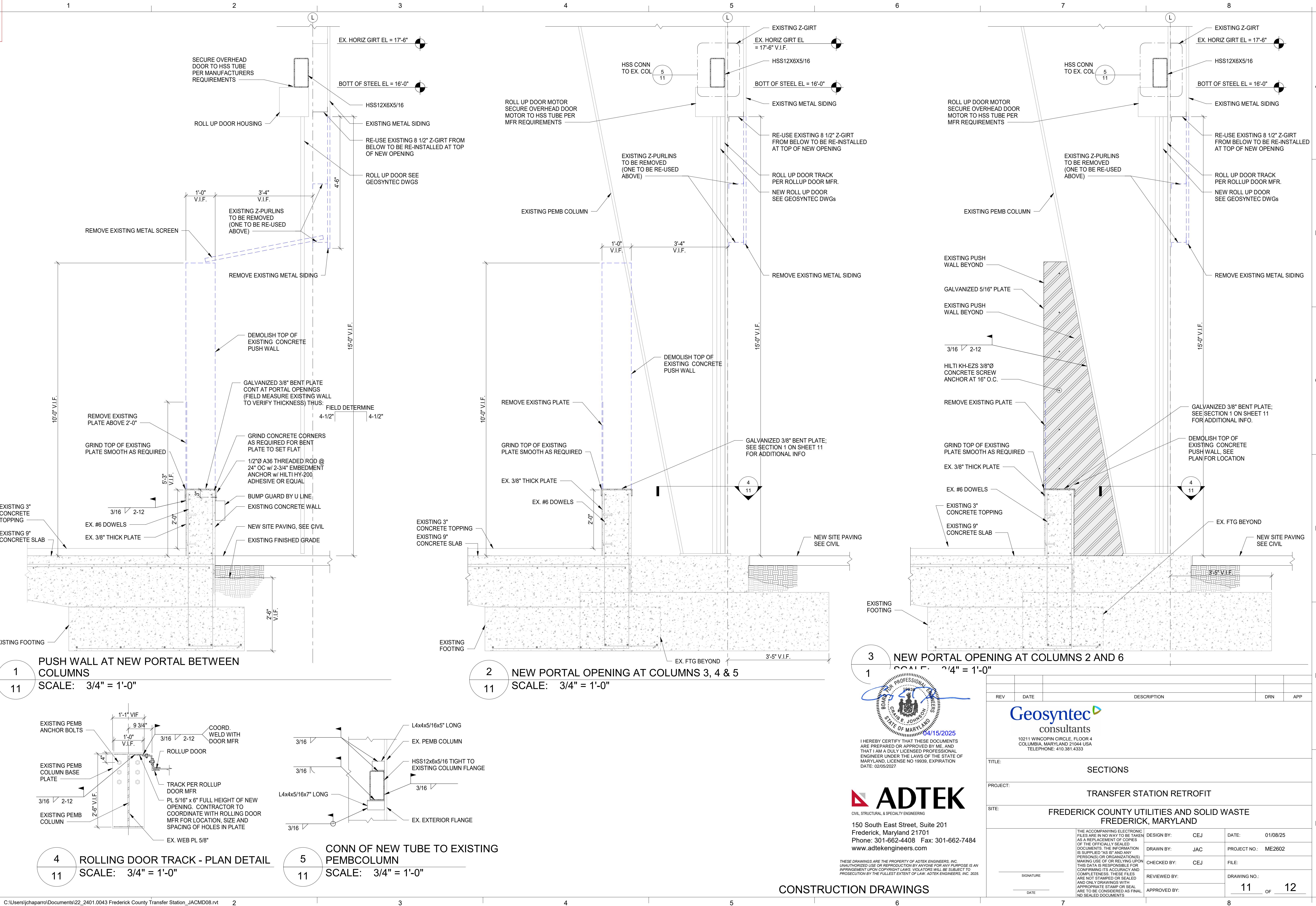
**ADTEK**  
CIVIL STRUCTURAL & SPECIALTY ENGINEERING  
150 South East Street, Suite 201  
Frederick, Maryland 21701  
Phone: 301-662-4408 Fax: 301-662-7484  
www.adtekengineers.com

THESE DRAWINGS ARE THE PROPERTY OF ADTEK ENGINEERS, INC. UNAUTHORIZED USE OR REPRODUCTION BY ANYONE FOR ANY PURPOSE IS AN INFRINGEMENT UPON COPYRIGHT LAWS. VIOLATORS WILL BE SUBJECT TO PROSECUTION BY THE FULLEST EXTENT OF LAW. ADTEK ENGINEERS, INC. 2025.

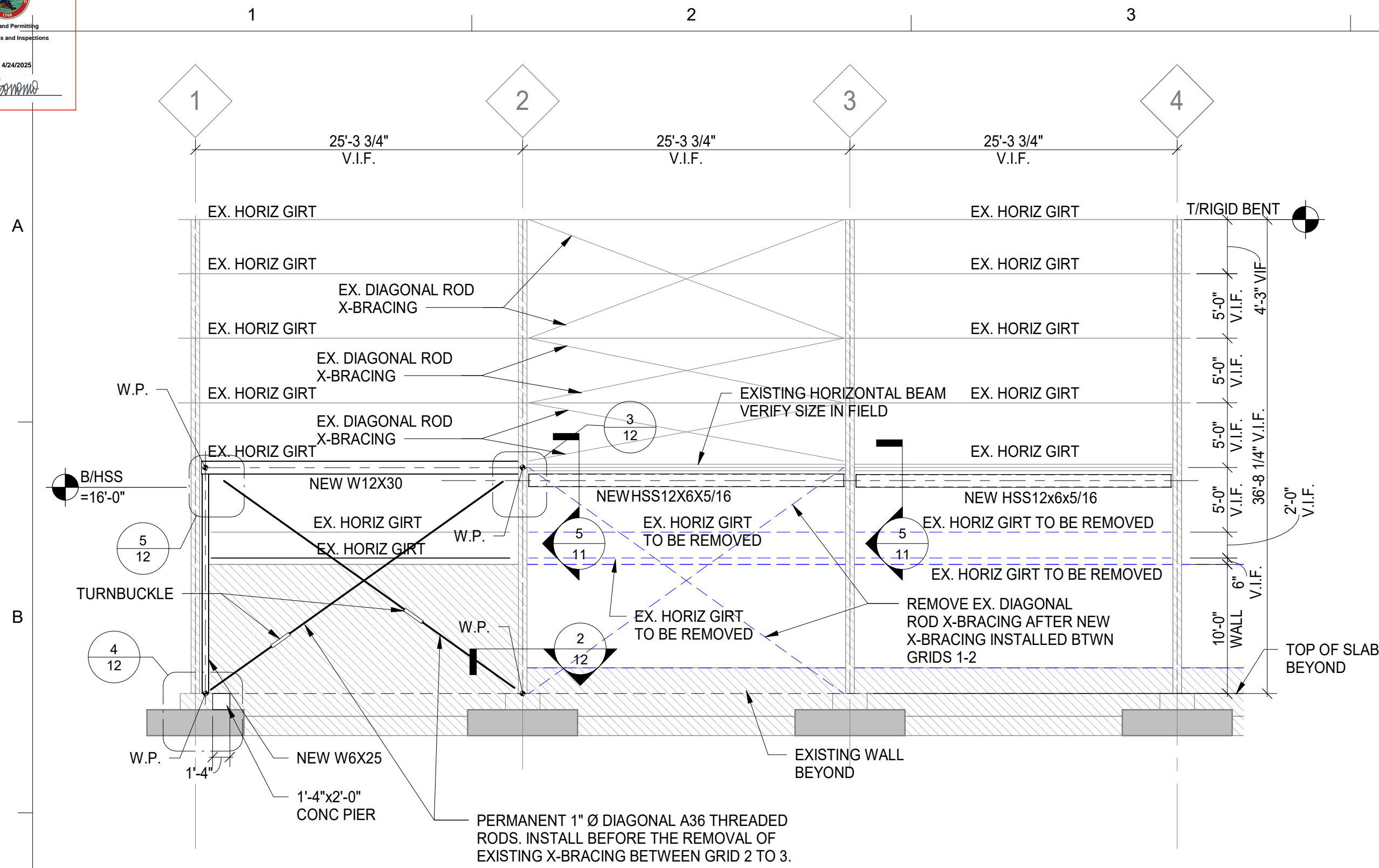
CONSTRUCTION DRAWINGS

REV	DATE	DESCRIPTION	DRN	APP
Geosyntec consultants 10211 WINCOPIN CIRCLE, FLOOR 4 COLUMBIA, MARYLAND 21044 USA TELEPHONE: 410.381.4333				
TITLE: PARTIAL FOUNDATION PLAN				
PROJECT: TRANSFER STATION RETROFIT				
SITE: FREDERICK COUNTY UTILITIES AND SOLID WASTE FREDERICK, MARYLAND				
SIGNATURE		DESIGN BY: CEJ	DATE: 01/08/25	
DATE		DRAWN BY: JAC	PROJECT NO.: ME2602	
		CHECKED BY: CEJ	FILE:	
		REVIEWED BY:	DRAWING NO.: 10 OF 12	
		APPROVED BY:		
THE ACCOMPANYING ELECTRONIC FILES ARE IN NO WAY TO BE TAKEN AS A REPLACEMENT OF COPIES OF THE OFFICIALLY SEALED DOCUMENTS. THE INFORMATION IS SUPPLIED "AS IS" AND ANY PERSON(S) OR ORGANIZATION(S) MAKING USE OF OR RELYING UPON THIS DATA IS RESPONSIBLE FOR CONFIRMING ITS ACCURACY AND COMPLETENESS. THESE FILES ARE NOT STAMPED OR SEALED AND ONLY DRAWINGS WITH APPROPRIATE STAMP OR SEAL ARE TO BE CONSIDERED AS FINAL. NO SEALED DOCUMENTS.				

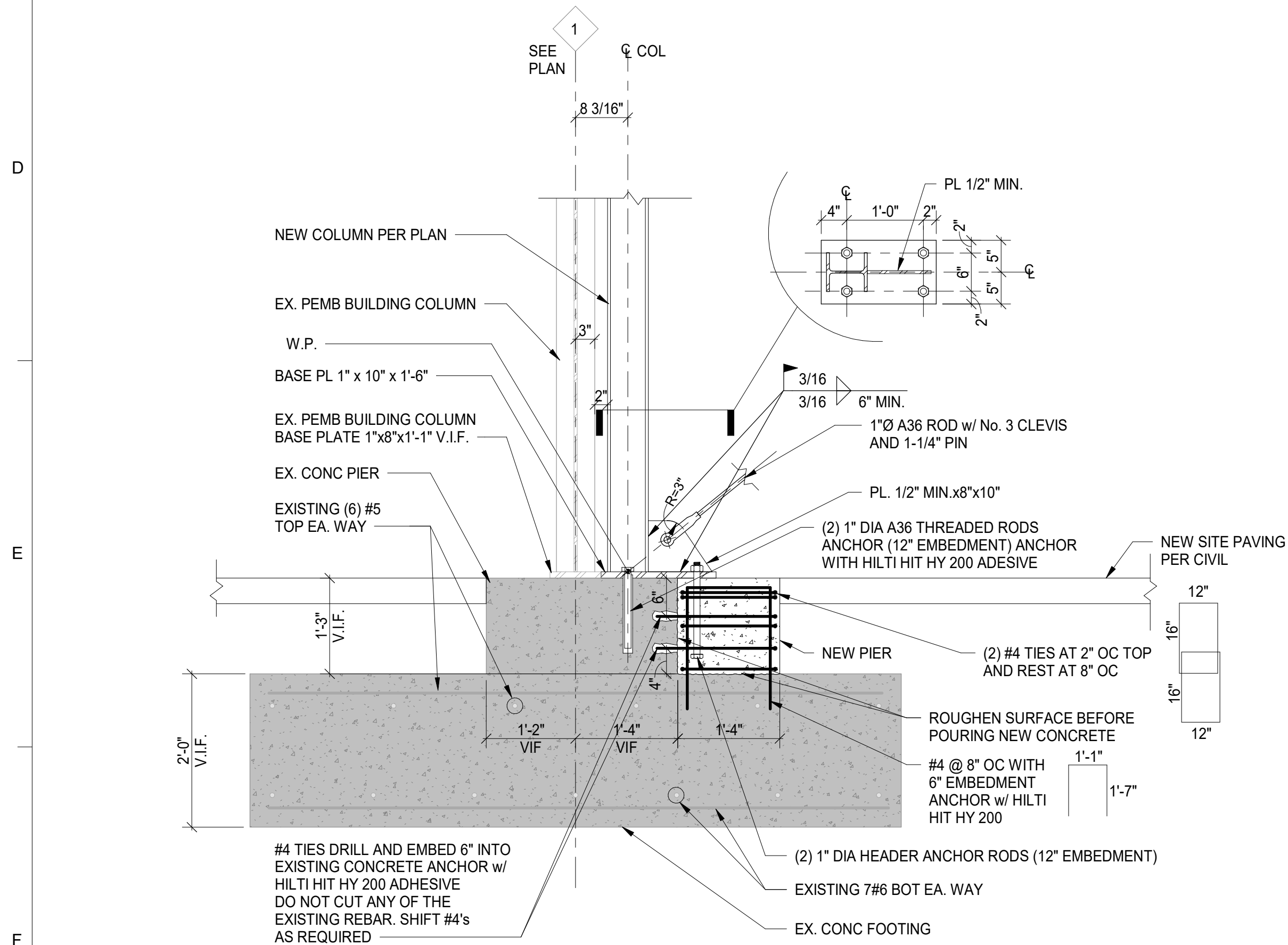




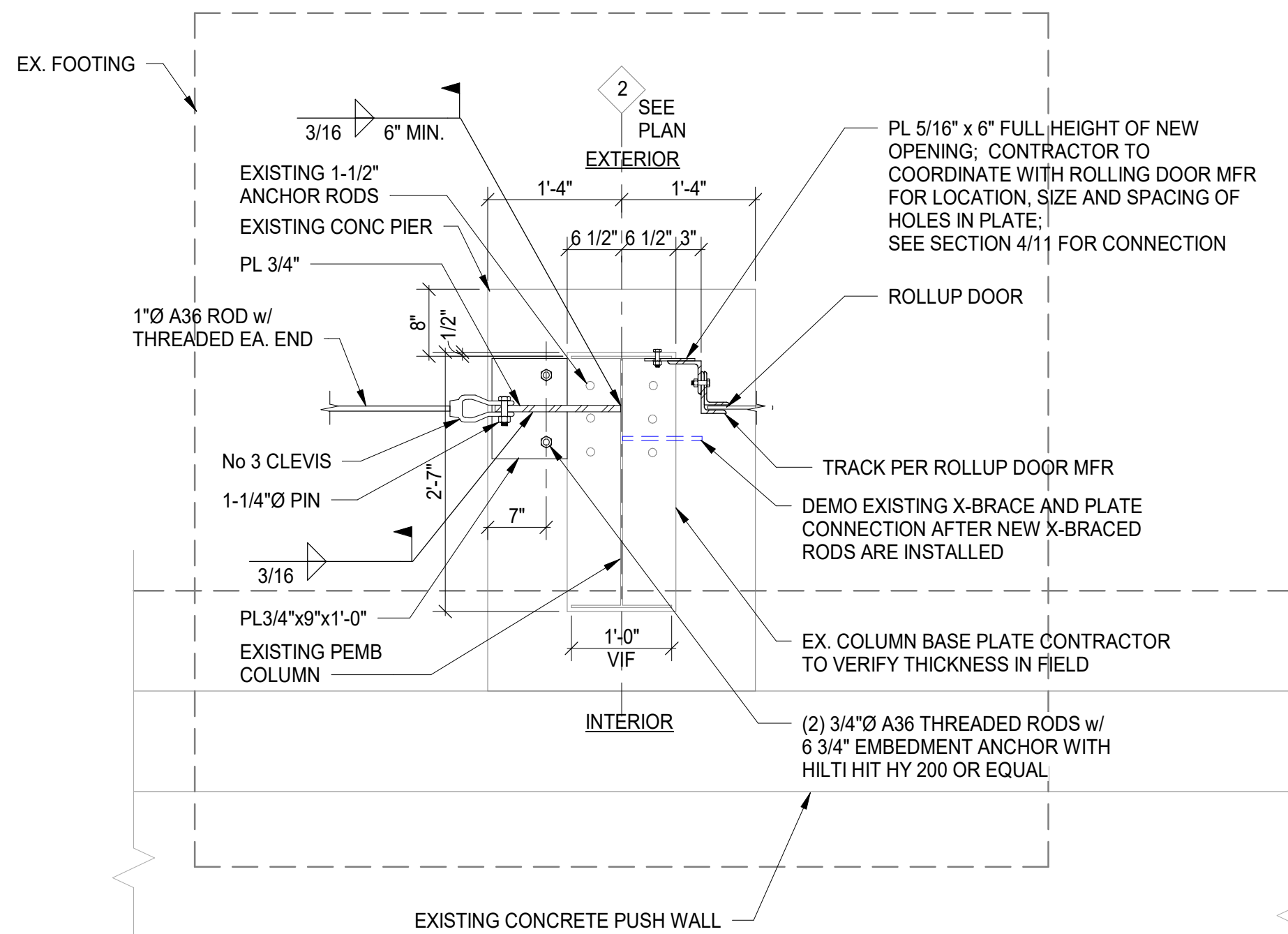




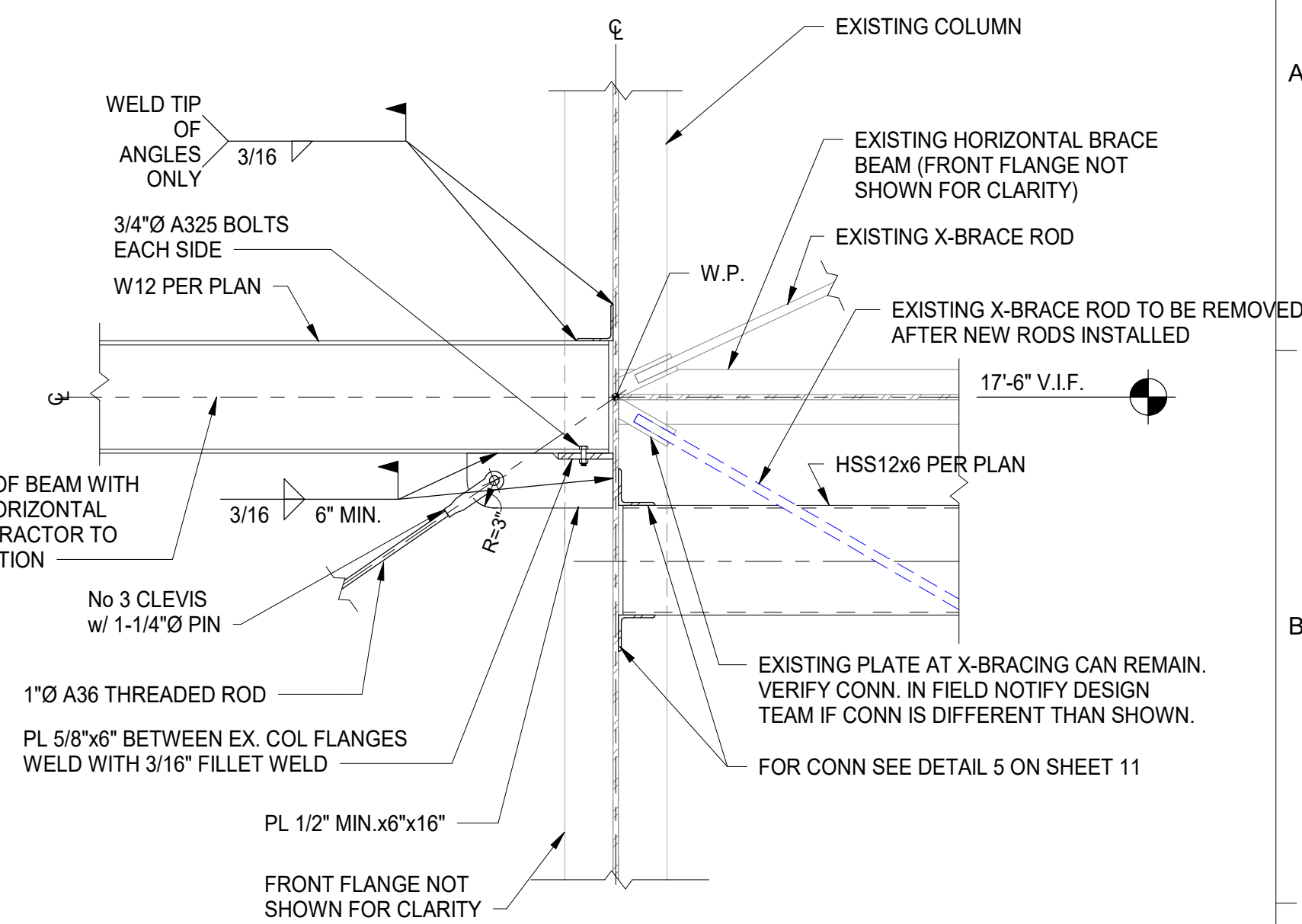
1  
12  
DIAGONAL ROD X-BRACED FRAME  
SCALE: 1/8" = 1'-0"



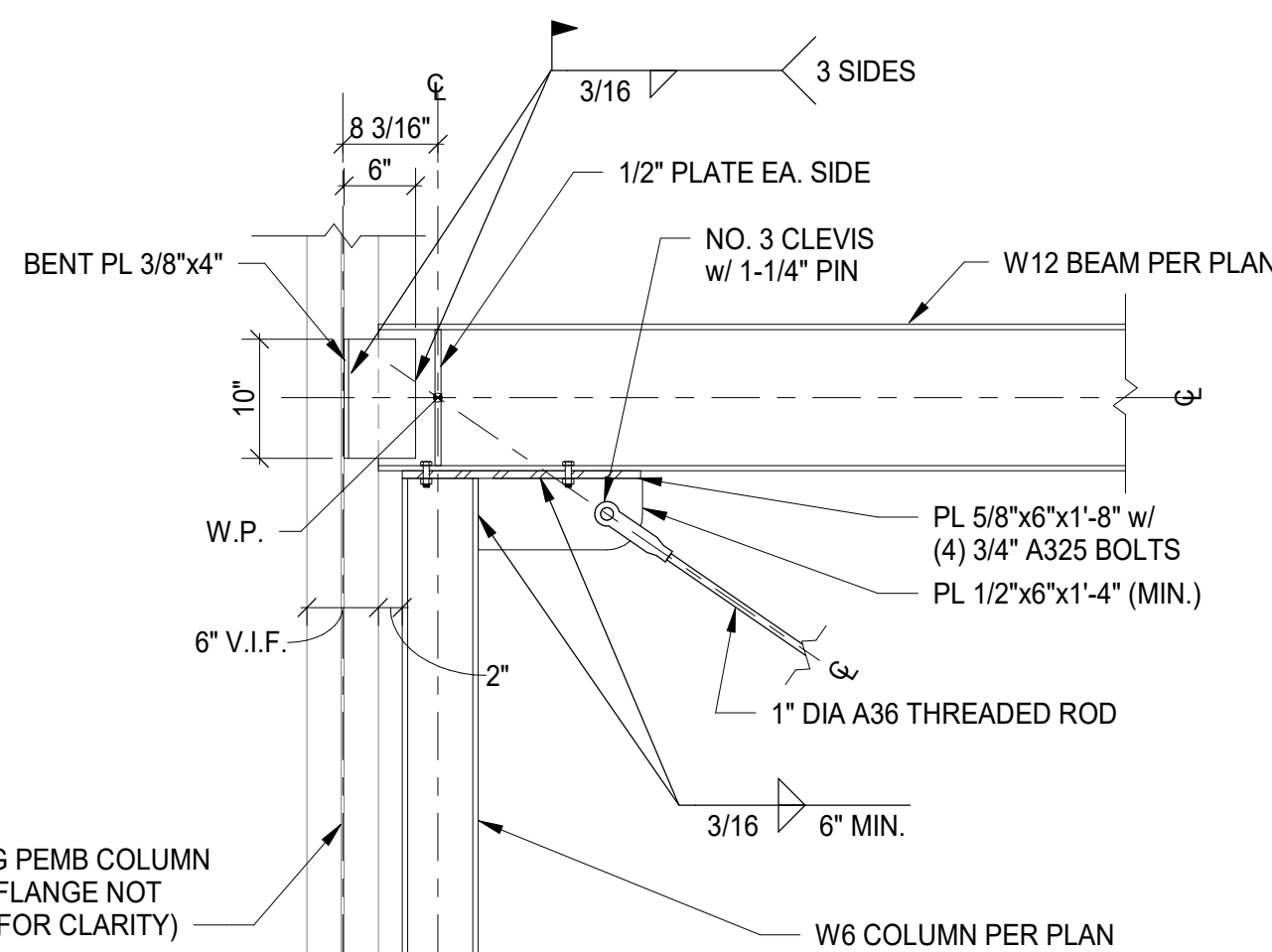
4  
12  
EXPANDED PIER & FOOTING AT MOMENT FRAME  
SCALE: 3/4" = 1'-0"



2  
12  
NEW COLUMN BASE DETAIL  
SCALE: 3/4" = 1'-0"



3  
12  
BEAM/HSS CONNECTION TO EXISTING COLUMN  
SCALE: 3/4" = 1'-0"



5  
12  
BEAM CONNECTION TO EXISTING COLUMN  
SCALE: 3/4" = 1'-0"



I HEREBY CERTIFY THAT THESE DOCUMENTS ARE PREPARED OR APPROVED BY ME, AND THAT I AM A DULY LICENSED PROFESSIONAL ENGINEER UNDER THE LAWS OF THE STATE OF MARYLAND. LICENSE NO 19939, EXPIRATION DATE: 02/05/2027



150 South East Street, Suite 201  
Frederick, Maryland 21701  
Phone: 301-662-4408 Fax: 301-662-7484  
www.adtekengineers.com

THESE DRAWINGS ARE THE PROPERTY OF ADTEK ENGINEERS, INC. UNAUTHORIZED USE OR REPRODUCTION BY ANYONE FOR ANY PURPOSE IS AN INFRINGEMENT UPON COPYRIGHT LAWS. VIOLATORS WILL BE SUBJECT TO PROSECUTION TO THE FULLEST EXTENT OF LAW. ADTEK ENGINEERS, INC. 2025

CONSTRUCTION DRAWINGS

REV	DATE	DESCRIPTION		DRN	APP
<div><div><div>Geosyntec</div><div>consultants</div></div><div>10211 WINCOPIN CIRCLE, FLOOR 4 COLUMBIA, MARYLAND 21044 USA TELEPHONE: 410.381.4333</div></div>					
TITLE:  FRAMING SECTIONS					
PROJECT:  TRANSFER STATION RETROFIT					
SITE:  FREDERICK COUNTY UTILITIES AND SOLID WASTE FREDERICK, MARYLAND					
<div><div>SIGNATURE</div><div>DATE</div></div>		THE ACCOMPANYING ELECTRONIC FILES ARE IN NO WAY TO BE TAKEN AS A REPLACEMENT OF COPIES OF THE OFFICIALLY SEALED DOCUMENTS. THE INFORMATION IS SUPPLIED "AS IS" AND ANY PERSON(S) OR ORGANIZATION(S) MAKING USE OF OR RELYING UPON THIS DATA IS RESPONSIBLE FOR CONFIRMING ITS ACCURACY AND COMPLETENESS. THESE FILES ARE NOT STAMPED OR SEALED AND ONLY DRAWINGS WITH APPROPRIATE STAMP OR SEAL ARE TO BE CONSIDERED AS FINAL. NO SEALED DOCUMENTS.	DESIGN BY:	CEJ	DATE: 01/08/25
			DRAWN BY:	JAC	PROJECT NO.: ME2602
			CHECKED BY:	CEJ	FILE:
			REVIEWED BY:		DRAWING NO.: 12 OF 12
			APPROVED BY:		