

BALTIMORE CITY PROCESSING & RECYCLING CONTRACTS ENTER 2ND YEAR

The Authority is approaching its second contract year for the acceptance, processing, and recycling of Baltimore City's single stream recovered material.

In March 2021, The Authority's Board of Directors approved the contract award of two processing companies, WM Recycle America (WMRA) and World Recycling (WR), to process and recycle the City's single stream material generated from single family residences, small businesses, City offices, schools, and drop-off facilities located throughout the City. The contracts are for 1-year terms with renewals available at the City's discretion through June 30, 2026.

Having two companies under contract provides Baltimore City with flexibility and greater processing capacity as recycling tonnages will continue to increase with the City's latest Recycling Cart Rollout. To date all City residents have received (or had the option to receive) new recycling carts free of charge through a public-private partnership that includes the Recycling Partnership, Baltimore Civic Fund and Closed Loop Partners. The Authority through its on-call contract with Geosyntec Consultants, assisted with project management and tracking of the Cart Rollout.

The City also can now mitigate capacity issues at its Northwest Transfer Station allowing its haulers to direct haul a

portion of material from drop-off facilities and certain curbside residential/commercial pick-ups. The WR facility is in the City and the WMRA facility is in Elkridge, MD.

Contracts with the City are market driven contracts with a revenue share component. The City receives 75 percent of a blended commodity market value (based on the City's material compositions) for single stream minus a processing fee \$95 per ton (WMRA) or \$77 per ton (WR). Under the current market as of May 2022, Baltimore City is paying up to \$6.60/ton (tip fee). The processing fees will increase per a published Consumer Price Index (CPI) starting July 1, 2023.

2

For SWANA, Not Their First Road-E-O ... But a Welcomed One After a Two-Year Hiatus

3

Recycling Tour of Camden Yards Provided Valuable Insight

4



RECOVERY 2022

MRN/SWANA Mid-Atlantic
Annual Conference

Thursday, June 23



FOR SWANA, NOT THEIR FIRST ROAD-E-O . . . BUT A WELCOMED ONE AFTER A TWO-YEAR HIATUS

SWANA's Mid-Atlantic Regional Road-E-O event occurred on May 12 & 13 after a two-year postponement due to the Covid Pandemic. The event was hosted by the Cecil County Department of Public Works at their scenic Central Landfill.



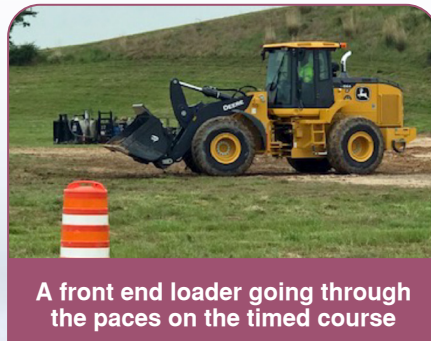
A landfill compactor backs through barrels that are placed slightly wider than the front blade

The Road-E-O is an annual event where operators demonstrate their exceptional skills in safely and efficiently maneuvering various landfill and solid waste collection equipment. Employers select their best field personnel to represent their respective organizations in friendly competition. The event also serves as a way for solid waste professionals and equipment operators from SWANA's Maryland, Pennsylvania and New Jersey chapters to interact and network with one another.

The event kicked off with a dinner at the Cecil County Central Landfill on the evening of May 12th. The following morning, competitors and volunteers met back at the landfill for an early breakfast. Then, the competitions were on!

Three staff members of the Authority served as volunteers at the Road-E-O this year. Diana Reighart and John Schott served as judges for the compactor and bulldozer obstacle course.

Keith Kingsley, operations inspector, served as a judge for the front loader waste truck (trucks with articulated arms that pick-up dumpsters), rear loader waste truck (typically seen on residential curbside routes), and roll-off truck obstacle course. Each driver started the course with a judged pre-trip truck inspection and individual segments of the course were judged using a points system with both time limits and demerits for hitting obstacles, and distance from walls while parking.



A front end loader going through the paces on the timed course



Roll-off truck backing into a tight space. The judges will measure the gap between the truck and the barrier

The total points were added to determine the winners of each category of truck. The other obstacle courses featured machinery such as a transfer trailer, a wheel loader and an articulated dump truck.

The event culminated with a luncheon and awards ceremony. First and second place winners from each category are now eligible to attend the SWANA International Road-E-O to be held in the fall in El Paso, Texas.



Front end loader weaving through the barrel course



A scenic view of Cecil County Landfill

RECYCLING TOUR OF CAMDEN YARDS PROVIDED VALUABLE INSIGHT

Thank you to the Maryland Stadium Authority and the Maryland Recycling Network for providing a waste management and recycling tour of Oriole Park at Camden Yards and M&T Bank Stadium on April 7.

This tour provided insight on the systems and procedures in place at each stadium to minimize waste and to reduce the stadium complex's carbon footprint. It was a great opportunity to see the inner workings of these state-of-the-art facilities and for the Maryland

Transportation Authority to highlight its environmental initiatives (Environmental Initiatives | Maryland Stadium Authority (mdstad.com)) and share ideas with MRN and SWANA members.



M&T Bank Stadium



Oriole Park at Camden Yards



Recycling facilities

SOUTH COUNTY COMMUNITY GARDENS

For the past several years, our composting vendor, WeCare Denali, LLC, has donated a small quantity of compost to the South County Community Gardens (SCCG) at Jug Bay Wetlands Sanctuary, located in Lothian, MD. The compost is processed from the curbside yard waste collected throughout Anne Arundel County and

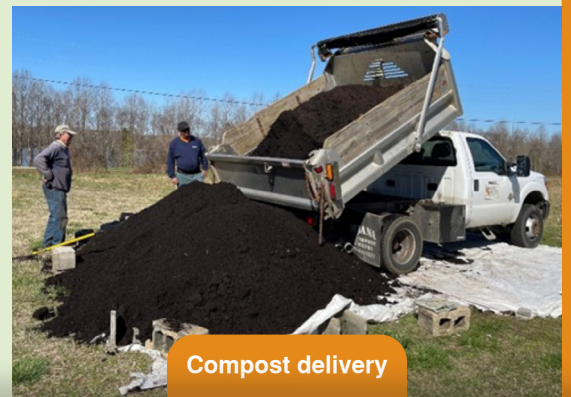
delivered to the Millersville Landfill and Resource Recovery Facility's compost pad.

The latest shipment was received in March 2022 and is used to grow vegetables, fruits, flowers and herbs in the community gardens. The food is primarily donated to Anne Arundel County food pantries. According to

SCCG's website, "We use the compost to enrich the soil before we plant. Our bountiful vegetable donations to local seniors and other organizations simply wouldn't happen without their generous support." This is a great example of working together to support initiatives that benefit the community as a whole.



South County Community Gardens at Jug Bay Wetlands Sanctuary



Compost delivery

SAVE THE DATE!

MRN/SWANA Mid-Atlantic Annual Conference

invites you to consider how we move on and move up post-pandemic...

Check out RECOVERY 2022...

maybe there is a more productive way to look at our options for 2022 and beyond.

Your ticket lets you open the door to ...

- Technical sessions that **bring you up-to-date on the hottest topics in the industry** including changing waste management and recycling models, policy & regulation, commodities markets, new technologies and more. [Click here to view the preliminary program.](#)
- **Sponsors and exhibitors sharing the latest and greatest tools & equipment to help you do your job better, faster, or at a lower cost.** Vendors - [Click here to see how you can build your brand and your business through sponsorship or exhibits.](#)
- **Networking opportunities to connect with your peers –**
Take a step out of your office environment and be among those who understand what you're faced with day in and day out. This conference will offer numerous opportunities for you to converse with your fellow recycling professionals.
- **Recharge your thinking and inspire creative approaches.**
The ideas you generate could improve your program – and your career.



RECOVERY 2022

Thursday, June 23



Northeast
Maryland
Waste
Disposal
Authority

100 S. Charles Street, Tower II – Suite 402
Baltimore, Maryland 21201
410-333-2730 / Fax: 410-333-2721
E-mail: authority@nmwda.org
www.nmwda.org

MEMBERS
Joseph J. Siemek
Chairman
Harford County
Vacant
Carroll County
Rhody R. Holthaus
Treasurer
Anne Arundel County
Vacant
Baltimore City

D'Andrea L. Walker
Baltimore County
Phillip S. Harris
Frederick County
Mark A. DeLuca
Howard County
Guillermo Wainer
Montgomery County
Dr. Charles Glass
Maryland Environmental
Service

WasteWatch is published quarterly by the Northeast Maryland Waste Disposal Authority, an independent agency of the State of Maryland governed by its Member Jurisdictions – Anne Arundel County, Baltimore City, Baltimore County, Carroll County, Frederick County, Harford County, Howard County and Montgomery County.