

THE AUTHORITY PROVIDES WASTE AND SLUDGE DISPOSAL SAVINGS TO CARROLL COUNTY

Last August, the Authority issued a procurement to experienced waste management vendors for operation of the Carroll County Northern Landfill Transfer Station, the transportation and disposal of municipal solid waste (MSW), and the transportation and disposal of sludge generated from waste water treatment plants operated by municipalities in Carroll County.

The Authority's current contract for Carroll County disposal services expires on June 30 of this year, but has optional renewal periods. The Authority conducted the procurement anticipating that the County may receive savings as compared to the current contract. Three proposals were received and after best and final offers the Carroll County Board of Commissioners and the Authority's Board approved a contract award to BFI Waste Services (Republic).

The contract guarantees the County will deliver 50,000 MSW tons to the transfer station for acceptance by Republic for the transfer and disposal at its Modern



Landfill, located in York, PA. There were no minimum guarantees for sludge. The MSW price proposal is a tiered structure whereas the County will receive additional savings for increased tons directed by the County to the transfer station. It is estimated that

this new contract with Republic will save the County more than \$900,000 in the initial three-year term. At the County's discretion, the Authority has the option to renew the contract for seven one-year periods through June 30, 2028.

2

How much Recycling is the State of Maryland Throwing Away?

3

Corrective Measures and Beneficial Use Design Contract Awarded

4

Authority Executive Director Now Zero Waste Certified



HOW MUCH RECYCLING IS THE STATE OF MARYLAND THROWING AWAY?



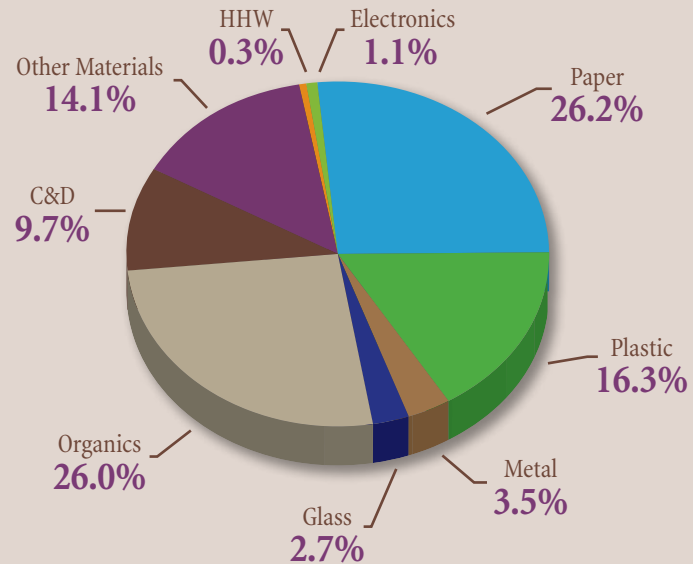
That was the major issue discussed when the Authority presented highlights from the 2016 Maryland Statewide Characterization Study at the Maryland Department of the Environment's Solid Waste and Recycling Managers Meeting on January 31. The study sampled landfills and transfer stations in eight jurisdictions: Calvert County, Cecil County, Charles County, Washington County, Garrett County, Carroll County, Somerset County and Baltimore City. Two additional jurisdictions, Prince George's County and Montgomery County, had previous waste sort data incorporated into this report for the statewide aggregation.

The presentation also included a discussion of the unique demographic regions in the state, such as its rural borders and its suburban and urban centers. It examined the types of waste sampled from residential, commercial, industrial and institutional generator sectors and looked at the methods for sampling and sorting. Sampling totals and material categories counted in the study also were discussed.

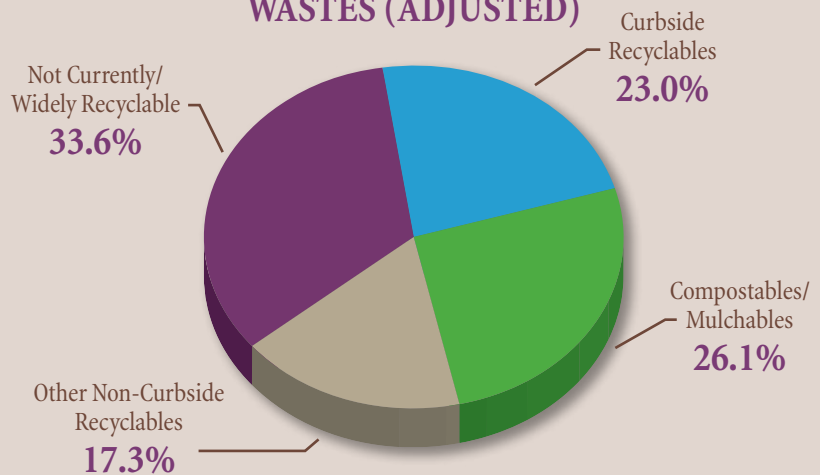
According to the study, organics and paper made up just over half of the entire waste stream, at more than 52 percent of disposed waste. It identified food waste as the most prevalent disposed material in both residential and commercial waste streams, at just under 18 percent of the entire waste stream.

Lastly, the impact of long-term waste management planning was discussed. Currently more than 66 percent of the disposed waste stream in the State could be diverted by using curbside recycling and non-curbside recycling programs, as well as by introducing widespread

2016 MARYLAND STATEWIDE DISPOSED MUNICIPAL SOLID WASTE COMPOSITION (ADJUSTED)



STATEWIDE DIVERTIBILITY OF DISPOSED WASTES (ADJUSTED)



composting and mulching programs. Nearly 34 percent of the disposed waste stream does not have a widely available or existing outlet for recycling.

A link to the full report on Maryland Department of the Environment's

website can be found here: <http://mde.maryland.gov/programs/LAND/AnalyticsReports/2016%20Maryland%20Statewide%20WCS%20Study.pdf>

Note: The charts above are based on data included in the Maryland Statewide Characterization Study.



CORRECTIVE MEASURES AND BENEFICIAL USE DESIGN CONTRACT AWARDED

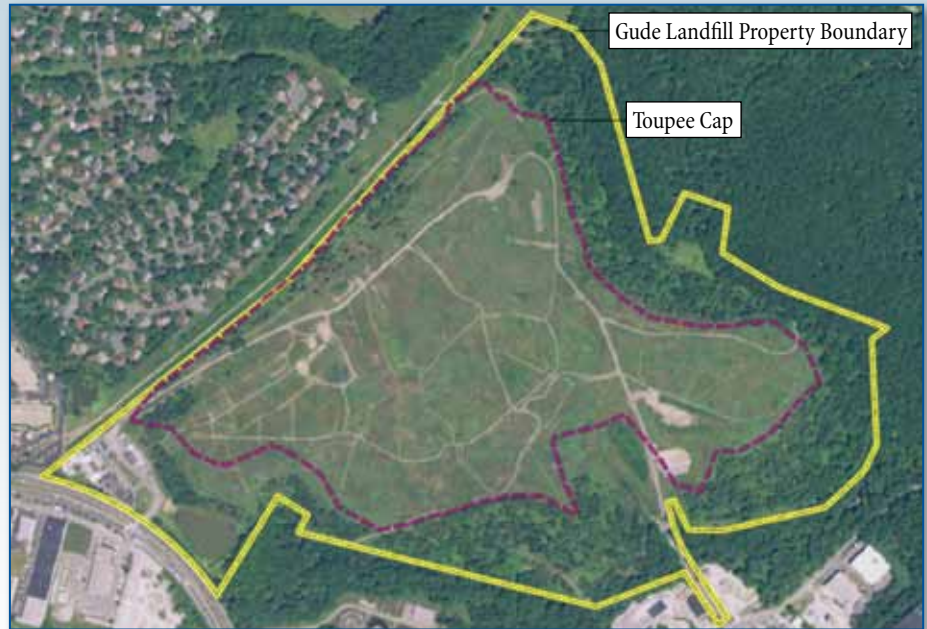


Montgomery County MD (“County”) has been working with the Maryland Department of the Environment

(“MDE”) under a Consent Order agreement to address certain concerns and potential impacts at the Gude Landfill (“Landfill”) located in Montgomery County, Rockville, Maryland. The Landfill property is approximately one hundred sixty-two (162) acres, of which approximately one hundred forty (140) acres were used for waste disposal. The Northeast Maryland Waste Disposal Authority (“Authority”) has been working with the County throughout the Nature and Extent Study (“NES”) and Assessment of Corrective Measures (“ACM”) Report, and ACM Report Revision process.

The NES followed a defined process to study the Landfill to present the current conditions of the site formally. MDE reviewed and accepted the NES in March 2012, which then triggered the next phase of the improvements to the Landfill, the ACM. The ACM process includes a prescribed technical review and cost review of various accepted technologies that could be employed to address the current environmental impacts of the Landfill. MDE approved the revised ACM in July 2016. The final approved Corrective Measure Alternative (“CMA”) is a toupee capping effort that will cover roughly 110 acres of the 160-acre site.

The County and Authority collaborated on the development of a Request for Proposals (“RFP”) for the first of three separate contracts for the implementation of the CMA, and conceptual development of potential beneficial land uses at the Landfill. Central to this total effort will be



active community engagement to provide timely information to interested parties. The primary goal of the remediation efforts is to meet the environmental protection requirements set forth in the ACM, with an eye to the beneficial use of the site in a manner that does not impact the performance of the implemented CMA. The overall remediation process will be accomplished through three separate contracts, which will provide for design and management controls through two engineering firms, the Design Engineer and the Construction Manager (see detail below), and a standalone construction effort.

Contract 1 – Design Engineer: will be responsible for the design, permitting, and other designated services for the Corrective Measures and the conceptual planning for potential land uses.

Contract 2 – Construction Manager: will be responsible for constructability reviews of the design/construction

documents as well as providing management, oversight, and inspection services throughout the construction of the Corrective Measures and potential site work to prepare for the potential land uses.

Contract 3 – General Contractor: will be responsible for the actual construction of the approved design and permitted Corrective Measures, and any potential land uses.

On August 4, 2017, the Authority, on behalf of the County and under direction from the County, requested proposals from engineering firms or engineering teams (“Design Engineer”) qualified to provide the requested services relating to solid waste facilities. The Request for Proposals and related contract required that the selected firm meet County Minority, Female and Disabled-Owned Businesses (MFD) Program, and living wage requirements. The Evaluation Committee, comprised of Authority staff, County staff, and County technical

Continued on page 4

Continued from page 3

consulting support reviewed the proposals received from interested firms. On January 10, 2018, the Authority Board accepted the Evaluation Committee's recommendation that the award of the Design Engineer contract be made to EA Engineering, Science, and Technology, Inc., PBC (EA Engineering). EA Engineering brings the benefit of the

institutional knowledge of the Landfill site and their direct regulatory experience with MDE for the former Landfill projects. As the firm that performed the NES and ACM, EA Engineering has knowledge of and rapport with the neighboring community, nearby community groups, and the County. The schedule

for the work is presented below, with likely award for the construction effort in the fourth quarter of Calendar Year 2019. The County and Authority staff will be actively managing the three contracts to bring the CMA to successful implementation.

TASK NAME	2018				2019			
	Qtr 1	Qtr 2	Qtr 3	Qtr 4	Qtr 1	Qtr 2	Qtr 3	Qtr 4
NTP	1/19							
Project Initiation and Subcontracting								
Task 1 - Project Management Services								
Task 2 - Pre-Design Services								
Task 3 - Engineering Design Services								
Task 4 - Permitting and Right-of-Entry Services								
Task 5 - Bidding Services								
Task 6 - Stakeholder Engagement Services								
Task 7 - Conceptual Land Use Planning Services								

AUTHORITY EXECUTIVE DIRECTOR NOW ZERO WASTE CERTIFIED

Congratulations to Authority Executive Director Chris Skaggs! Chris has taken SWANA's Zero Waste Principles and Practice course, taken the exam, and has received his SWANA certification. The Zero Waste Principles & Practices course has been added to the suite of certification courses to equip solid waste managers



with the tools to move the Zero Waste discussion forward. The Authority's Deputy Director Andrew Kays is also Zero Waste certified and is one of only two trainers for this certification in SWANA's Mid-Atlantic Chapter.



100 S. Charles Street, Tower II – Suite 402
Baltimore, Maryland 21201
410-333-2730 / Fax: 410-333-2721
E-mail: authority@nmwda.org
www.nmwda.org

EXECUTIVE DIRECTOR
Christopher W. Skaggs

- MEMBERS
- | | |
|---|---|
| James M. Irvin
Chairman
Howard County | Steven A. Walsh
Baltimore County |
| Michael G. Marschner
Treasurer
Frederick County | Jeffrey D. Castonguay
Carroll County |
| Rhody R. Holthaus
Anne Arundel County | Joseph J. Siemek
Harford County |
| Rudolph S. Chow
Baltimore City | Vacant
Montgomery County |
| | Roy McGrath
Maryland Environmental Service |

WasteWatch is published quarterly by the Northeast Maryland Waste Disposal Authority, an independent agency of the State of Maryland governed by its Member Jurisdictions – Anne Arundel County, Baltimore City, Baltimore County, Carroll County, Frederick County, Harford County, Howard County and Montgomery County.



SAVE THE DATE

MRN & SWANA Mid-Atlantic Annual Conference
June 19, 2018 beginning at 8:00am –
Wednesday, June 20, until 2:00pm
Turf Valley Conference Center, Ellicott City, MD
Details to be announced.