


MEMORANDUM

TO: Interested Parties

FROM: John Schott 
Senior Project Manager

DATE: April 10, 2025

RE: Addendum No. 1 to the Request for Proposals – Solid Waste Material Transportation Services for Baltimore City, Maryland

The Northeast Maryland Waste Disposal Authority is extending the RFP Due Date. The Proposal due date is 3:00 p.m. (local time) on Wednesday, April 23, 2025 (“Due Date”).

Below are responses to questions from interested contractors.

1. Can we provide multiple cost proposal forms based on the type of trailers to be provided for the Service?

Response: *Yes. Proposers may provide two cost proposal forms: 1.) Use of Open top trailers 2.) Use of closed-top compactor trailers to be loaded from the City’s Compactors. Drawings of City Compactors are attached.*

2. Is the Contractor required to provide pricing for all items stated in the Cost Proposal Form?

Response: *Yes. Proposers are required to provide pricing (dollar per ton per mile) for all solid waste material (single stream, waste, cardboard, and glass) including the specified mileages.*

3. Can a contractor visit the Northwest Transfer Station to take measurements of compactors?

Response: *The Authority and Baltimore City held a non-mandatory pre-proposal meeting/Transfer Station tour on April 2, 2025. Attached are the Compactor Drawings. Proposer shall submit requests for additional visits via procurement@nmwda.org.*

MEMBERS:

4. Can you list all disposal locations you have gone to in the last 12 months besides Bresco or Elkridge?

Response: *The Disposal Facilities are WIN Waste Baltimore (BRESKO) located at 1801 Annapolis Rd, Baltimore, MD 21230 and Quarantine Road Landfill located at 6100 Quarantine Rd, Curtis Bay, MD 21226. The Processing Facilities are WM Elkridge Material Recycling Facility located at 7175 Kit Kat Rd, Elkridge, MD 21075 and the WM Baltimore Recycling Center located at 6401 Quad Ave. Baltimore, MD 21205. WM's backup processing facility under current contract is the Dulles Recycling Facility located at 45752 Woodland Road, Sterling, VA 20166.*

5. Can you provide destination of disposal locations that have been submitted for the Disposal RFP?

Response: *There is currently no Disposal RFP for Baltimore City. The Authority is currently procuring a new contract for the processing of single stream recovered material. Information regarding this procurement is located on our website ([procurement opportunities - Northeast Maryland Waste Disposal Authority](#)).*

6. Can you please confirm the hours of operations at Elkridge and do you have any restrictions of access times?

Response: *WM Elkridge MRF (Monday – Friday 4:00 a.m. – 9:00 p.m. and Saturday 6:00 a.m. – 1:00 p.m.)*

7. Can you amend the pricing schedule for pricing with an over-the-top load and separate pricing utilizing a compactor trailer?

Response: *See response to Question 1 above.*

8. Considering the work isn't guaranteed could the bonding requirements be deleted or reduced?

Response: *There will be no changes to the required proposal bond and performance bonds. Prior to the start of service, the Contractor shall provide the City, with a copy to the Authority, with a performance bond, letter of credit, or cashier's check in the amount of one year of anticipated services per Confirmation, with the obligee being the City, to cover the entire term of the Agreement.*

Attachment

EQUIPMENT REQUIRED

- 1) M-1475XV WITH 48" RAM PENETRATION STANDARD CLEAR TOP OPENING.
- 2) POWER UNIT 50/125

SHIPPED LOOSE ITEMS/REQUIRED ASSEMBLIES

- 1) SONIC SENSORS ARE SHIPPED LOOSE
- 2) PUSH BUTTON STATION AND DRIVER/JOG CONTROLS TO BE LOCKED BY INSTALLER
- 3) UNIT WILL HAVE TO BE INSTALLED ON STAND

APPROXIMATE WEIGHTS

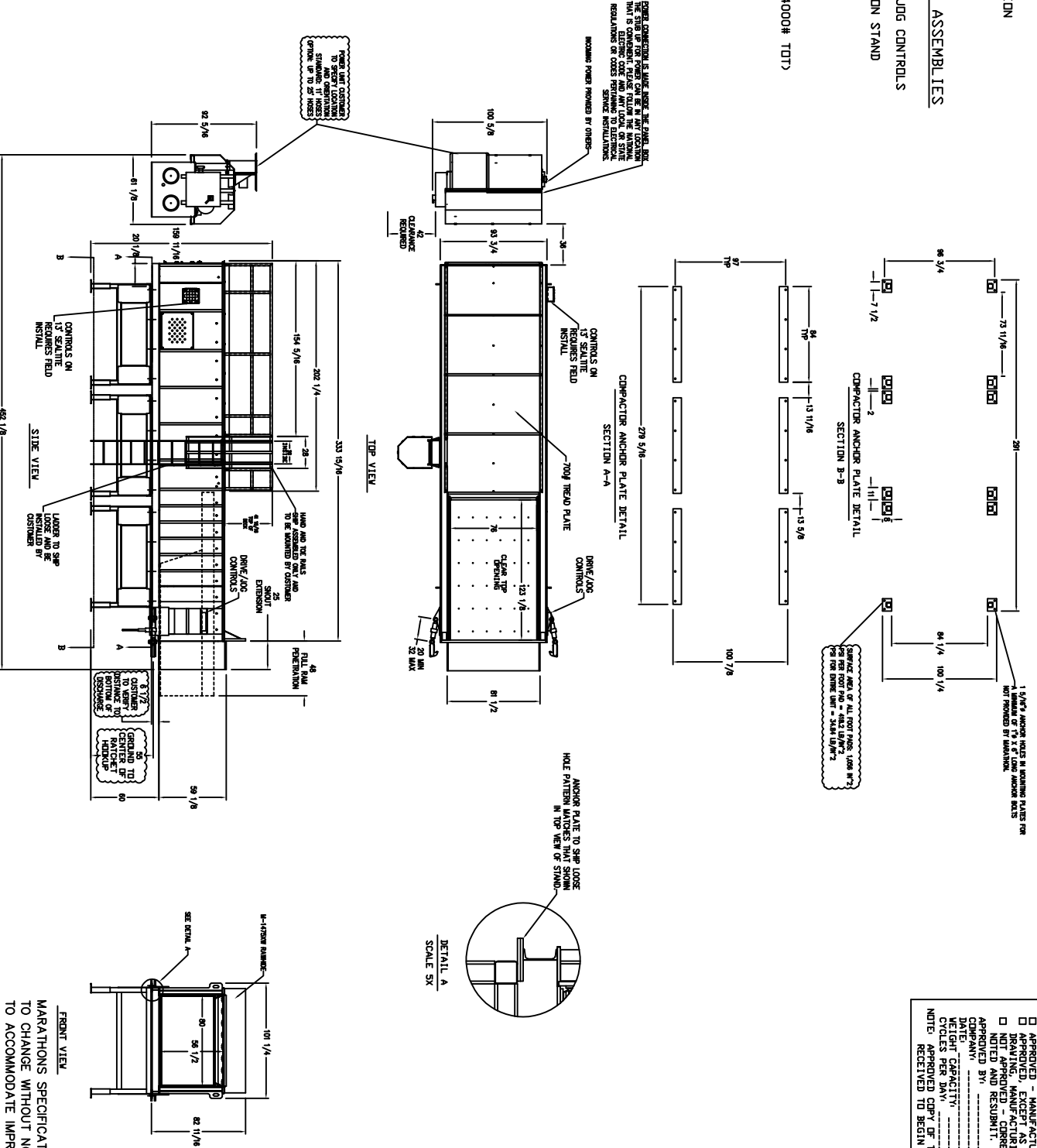
- 1) M-1475XV = 36,800#
- 2) 50-125 POWER PACK = 4225#
- 3) STAND SECTION (3 TOT) = 1333# (4000# TOT)

HYDRAULIC OIL

ALL POWER UNITS 30 HP AND ABOVE SHIP WITHOUT HYDRAULIC FLUID. IT IS THE SOLE RESPONSIBILITY OF THE PURCHASER AND/OR END-USER OF THIS EQUIPMENT TO PROVIDE REQUIRED HYDRAULIC FLUID.

NOTE

TRAILER TYPES VARY AND IT IS THE CUSTOMER'S RESPONSIBILITY TO MAKE SURE THE COMPACTOR WILL MATE WITH THE TRAILERS CORRECTLY.



APPROVED - MANUFACTURING MAY PROCEED
 APPROVED, EXCEPT AS NOTED - RESUBMIT
 NOT APPROVED - CORRECT DRAWING AS NOTED AND RESUBMIT.
 APPROVED BY: _____
 COMPANY: _____
 WEIGHT CAPACITY: _____
 CYCLES PER MIN: _____
 NOTE: APPROVED COPY OF THIS DRAWING MUST BE RECEIVED TO BEGIN MANUFACTURE OF UNIT.

TITLE:
 M-1475XV RAMHIDE 50/125
 60" DISCHARGE HEIGHT

FRONT VIEW

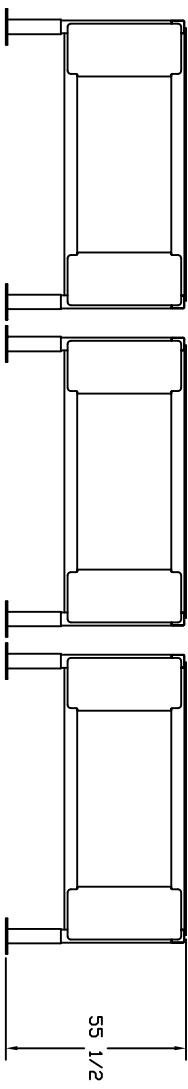
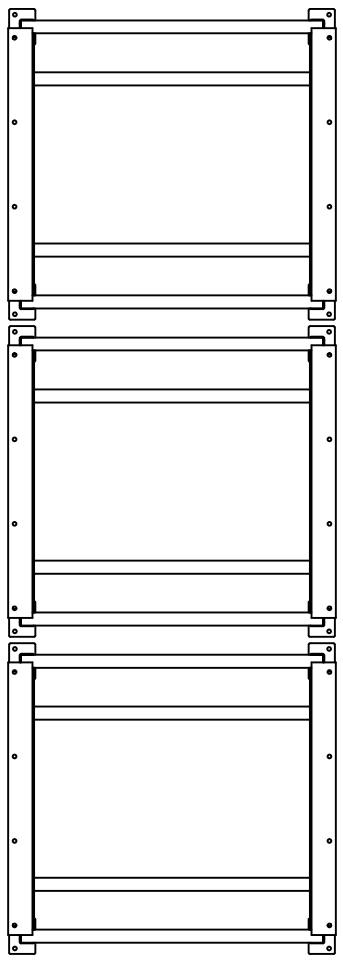
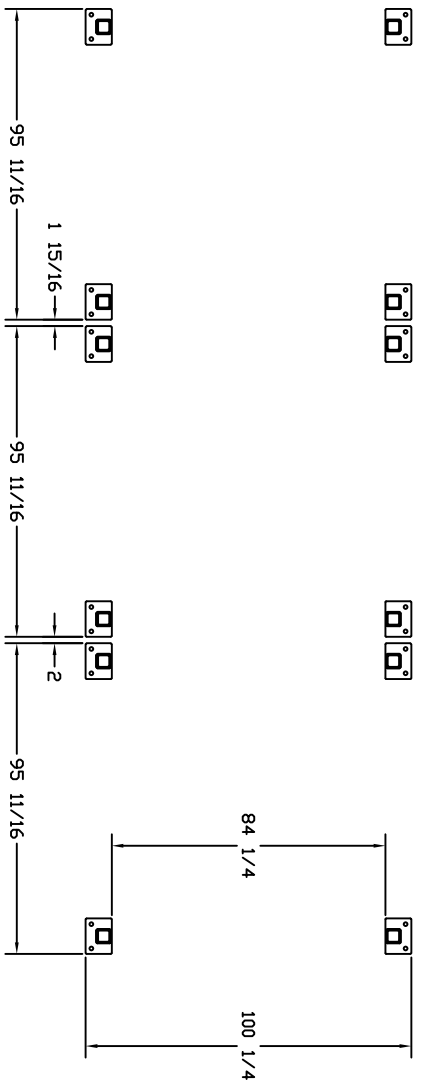
MARATHONS SPECIFICATIONS ARE SUBJECT TO CHANGE WITHOUT NOTICE IN ORDER TO ACCOMMODATE IMPROVEMENTS TO THE EQUIPMENT.

DR. JB | **APP.**
CR. | **DATE: 2/28/24**
SCALE:
TOL.:
DRAWING NO.: 81050

MARATHON
 VERNON, AL

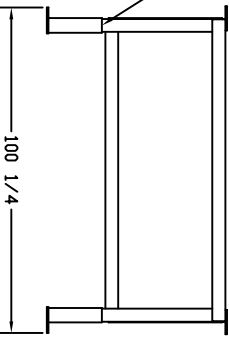
This drawing and all of the information and rights embodied and contained herein constitute confidential, proprietary information and trade secrets of Marathon Equipment Company. You are not permitted to use, disclose, distribute, copy, transmit, disseminate, create derivative works from or otherwise reproduce this drawing in whole or in part except as authorized, in writing, by Marathon Equipment Company. You agree to immediately return this drawing and any copies or reproductions thereof upon request by Marathon Equipment Company.

MARATHONS SPECIFICATIONS ARE SUBJECT TO CHANGE WITHOUT NOTICE IN ORDER TO ACCOMMODATE IMPROVEMENTS TO THE EQUIPMENT.




SET THE STAND IN PLACE PER APPROVAL DRAWING HOLD THE HEIGHT PER DIMENSION ON APPROVAL DRAWING WELDED TRIPLE PASSES TELESCOPIC LEG TO STAND DRILLED ϕ 1 1/8 AND ANCHOR MIN. OF ϕ 1 X 6 THE STAND TO CONCRETE NOT PROVIDING BY MARATHON. PLACE THE BODY ON TO STAND AND BOLT ANCHOR PLATES TOGETHER SEE DWG 81410.

TRIPLE PASSES WELDS

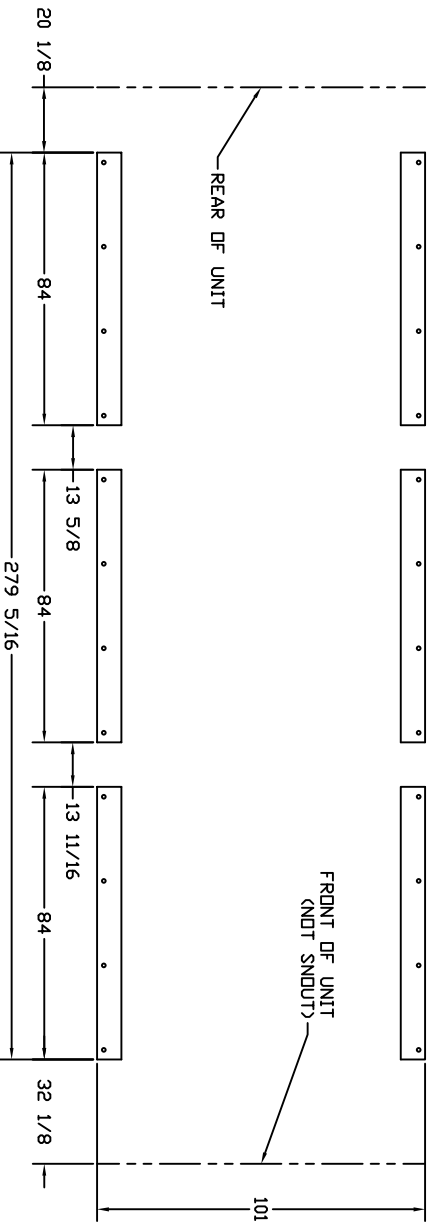


TITLE:
M-1475XW STAND DETAIL PER DWG 8150

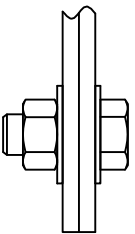
This drawing, and all of the information and rights embodied and contained herein, constitutes confidential, proprietary information and trade secrets of Marathon Equipment Company. You are not permitted to use, disclose, distribute, copy, transmit, license, create derivative works from or otherwise reproduce this drawing in whole or in part, except as authorized, in writing, by Marathon Equipment Company. You agree to immediately return this drawing and any copies or reproductions thereof upon request by Marathon Equipment Company.

 <p>MARATHON VERNON, AL</p>	
DR. JW	APP.
OK:	DATE: 07-25-24
TOL:	SCALE: 3/8"=1'
DRAWING NO. 81409	

MARATHONS SPECIFICATIONS ARE SUBJECT TO CHANGE WITHOUT NOTICE IN ORDER TO ACCOMMODATE IMPROVEMENTS TO THE EQUIPMENT.



ANCHOR PLATES WILL BE WELDED ON TO BODY. INSTALLER IS RESPONSIBLE TO BOLT BODY AND STAND TOGETHER. USE 1" HARDWARES.



This drawing, and all of the information and rights embodied and contained herein, constitutes confidential, proprietary information and trade secrets of Marathon Equipment Company. You are not permitted to use, disclose, distribute, copy, transmit, license, create derivative works from or otherwise reproduce this drawing in whole or in part except as authorized, in writing, by Marathon Equipment Company. You agree to immediately return this drawing and any copies or reproductions thereof upon request by Marathon Equipment Company.

TITLE:
M-1475XW ANCHOR DETAIL PER DWG 8150



DR. JW
OK: APP.
DATE: 07-25-24
SCALE: 3/8"=1"
TOL:
DRAWING NO. 81410